



Amphi[®] Sophorolipids

High-activity, multifunctional biosurfactants for use in industrial and institutional (I&I) cleaning applications.

Class Sophorolipids

TSCA Certified*



NATURAL

Vegan, non-GMO and USDA certified as 100% biobased



SUSTAINABLE

Readily biodegradable with industry-low aquatic toxicity



GENTLE

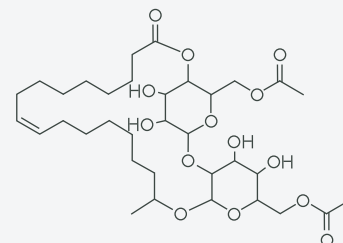
Safe and mild at use level without sacrificing performance



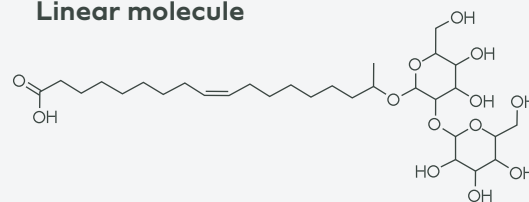
MULTIFUNCTIONAL

Non-ionic and anionic uses, can act as primary or secondary surfactants

Lactonic molecule



Linear molecule



UNMATCHED in Performance and Sustainability

- ✓ High activity levels
- ✓ EPA CleanGredients
- ✓ Replace petrochemical surfactants
- ✓ Easily dilutable, supports high concentrate formulas
- ✓ Higher efficacy
- ✓ Low carbon footprint

FREE from

- ✗ Palm oil
- ✗ 1, 4-dioxane
- ✗ Ethylene oxide
- ✗ Formaldehyde
- ✗ Proposition 65 chemicals

*Amphi[®] CL & CH TSCA pending

Applications

Amphi® biosurfactants are versatile solutions with unique properties:

- ✓ **Wide HLB 6–12**
- ✓ **Surface tension reduction**
- ✓ **Low CMC**
- ✓ **Small micelle size**
- ✓ **Non-ionic and anionic character**

In formulations, Amphi® enhances performance:



WETTING

Surface tension reduction, low CMC and deeper penetration



SOLUBILITY

Oil and grease removal



EMULSIFICATION

Clean rinsing



DISPERSION

Better rinsing of dirt and oil

Formulating the Future:

Effective Date: January 19, 2022

Carpet Shampoo

Ingredients	Weight %
Water	77.19
Amphi® M	7.28
Sodium Citrate	0.56
Acrylic Polymer	0.19
Sodium Caprylyl Sulfonate	5.56
Disodium Phosphate	0.42
Fragrance	0.56
Stabilizer	0.09
Sodium Hydroxide	0.37
Zinador™ 35	0.83
Chelator	0.46
Isopropyl Alcohol	4.64
Sodium Lauroyl Sarcosinate	1.85
Total	100.00

Formulated by Freelance Formulation

Waterproof Mascara

Benchmark Formulation

Amphi® M Formulation



All Purpose Cleaner

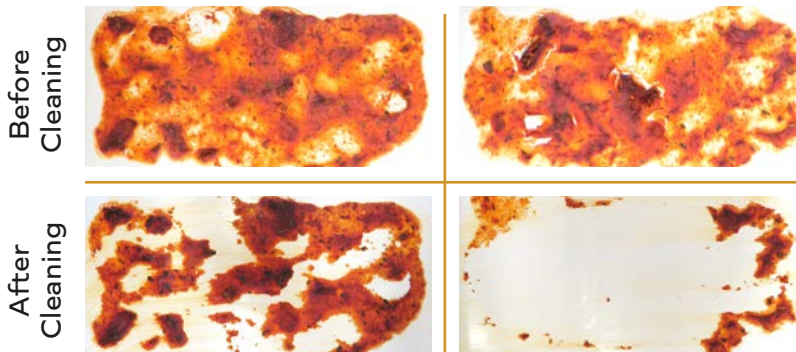
Ingredients	Weight %
Water	94.34
Amphi® M	3.55
Sodium Citrate	0.66
Stabilizer	0.86
Sodium Hydroxide	0.10
Urea	0.23
Fragrance	0.23
Iminodisuccinate	0.03
Total	100.00

Formulated by Freelance Formulation

Tomato Sauce

Benchmark Formulation

Amphi® M Formulation



Contact us for additional performance data and applications
LocusIngredients.com | 888-510-0004 | info@locusingredients.com

© 2023 All rights reserved



V1.3